



GABA A Receptor $\alpha 2$ Polyclonal Antibody

Catalog No	YP-Ab-01211
Isotype	IgG
Reactivity	Human;Rat;Mouse
Applications	WB;IHC;IF
Gene Name	GABRA2
Protein Name	Gamma-aminobutyric acid receptor subunit alpha-2 (GABA(A) receptor subunit alpha-2)
Immunogen	Synthetic Peptide of GABA A Receptor $\alpha 2$
Specificity	GABA A Receptor $\alpha 2$ protein(A224) detects endogenous levels of GABA A Receptor $\alpha 2$
Formulation	Liquid in PBS containing 50% glycerol, 0.5% BSA and 0.02% sodium azide.
Source	Polyclonal, Rabbit,IgG
Purification	The antibody was affinity-purified from rabbit antiserum by affinity-chromatography using specific immunogen.
Dilution	WB 1:1000-2000, IHC 1:100-200. IF 1:50-200
Concentration	1 mg/ml
Purity	$\geq 90\%$
Storage Stability	-20°C/1 year
Synonyms	Gamma-aminobutyric acid receptor subunit alpha-2 (GABA(A) receptor subunit alpha-2)
Observed Band	51kD
Cell Pathway	Cell junction, synapse, postsynaptic cell membrane ; Multi-pass membrane protein . Cell membrane ; Multi-pass membrane protein . Cytoplasmic vesicle membrane . Cell projection, dendrite .
Tissue Specificity	Amygdala,Brain,
Function	function:GABA, the major inhibitory neurotransmitter in the vertebrate brain, mediates neuronal inhibition by binding to the GABA/benzodiazepine receptor and opening an integral chloride channel.,online information:Forbidden fruit - Issue 56 of March 2005,polymorphism:Genetic variations in GABRA2 determine the genetic susceptibility to alcoholism [MIM:103780].,similarity:Belongs to the ligand-gated ionic channel (TC 1.A.9) family.,subunit:Binds UBQLN1 (By similarity). Generally pentameric. There are five types of GABA(A) receptor chains: alpha, beta, gamma, delta, and rho.,
Background	GABA is the major inhibitory neurotransmitter in the mammalian brain where it acts at GABA-A receptors, which are ligand-gated chloride channels. Chloride conductance of these channels can be modulated by agents such as benzodiazepines that bind to the GABA-A receptor. At least 16 distinct subunits of GABA-A receptors have been identified. Alternatively spliced transcript variants



encoding different isoforms have been found for this gene. [provided by RefSeq, Nov 2013],

matters needing attention

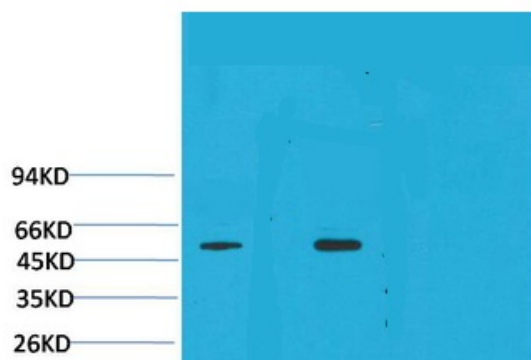
Avoid repeated freezing and thawing!

Usage suggestions

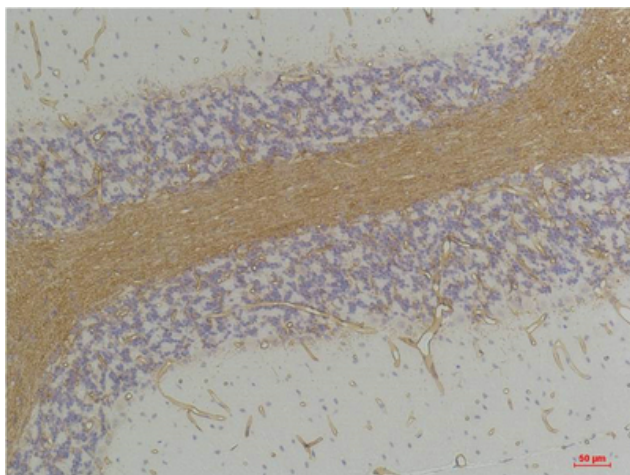
This product can be used in immunological reaction related experiments. For more information, please consult technical personnel.

Products Images

A224 GABAx2R
mouse Rat
brain brain



Western blot analysis of 1) Mouse Brain Tissue, 2) Rat Brain Tissue with GABA A Receptor $\alpha 2$ Rabbit pAb diluted at 1:2,000.



Immunohistochemical analysis of paraffin-embedded Rat Brain Tissue using GABA A Receptor $\alpha 2$ Rabbit pAb diluted at 1:200.